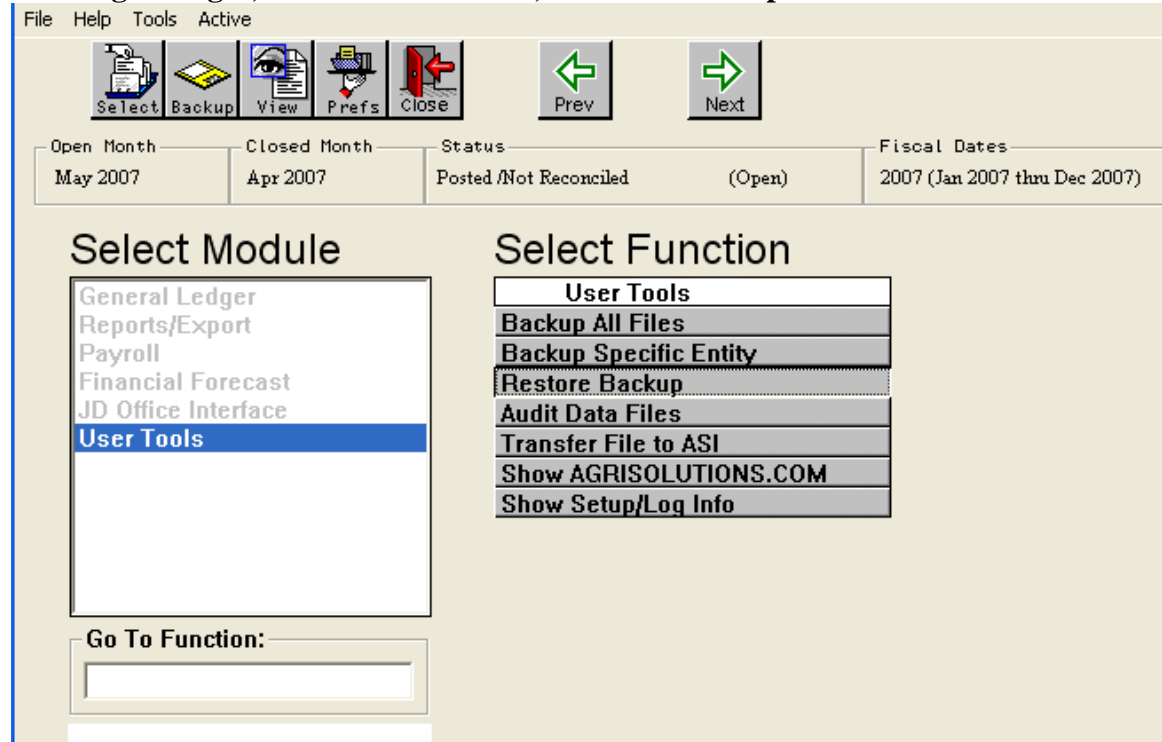


## RESTORE DATA

If AgManager program is currently installed on the computer and has data that is accessible.

Start AgManager, Select “User Tools”, “Restore Backup”



On the first line – type the letter of the drive where the data is located, i.e. A: (Floppy Drive); D: (CD Rom); F: (Flash Drive); or select the eyeglasses to “browse”.

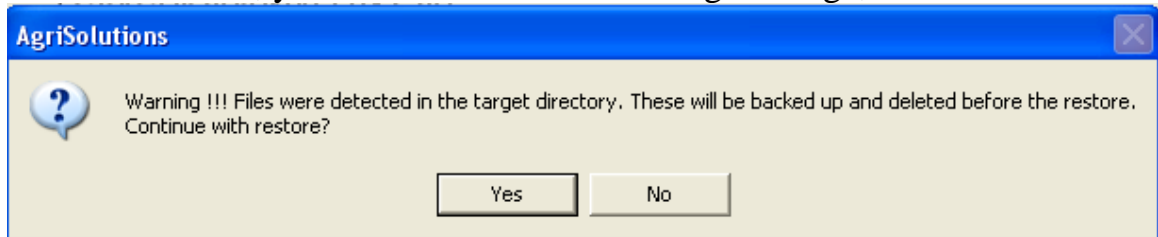
If your floppy backup consists of more than one disk, insert Disk#1 (first)

Tab to the next line and the system should find the backup. The system should prompt you to insert last (floppy) disk of the backup.

“Restoring To” – the system will automatically fill in this field.  
 Onfarm customers – the system will default to C:\AGRI\DAT

If you have multiple entities and would like “Entity Restore” you must know the Entity Code. From the main menu, Select Entity, Entity Info.

Select “Restore”, you will receive the following message,

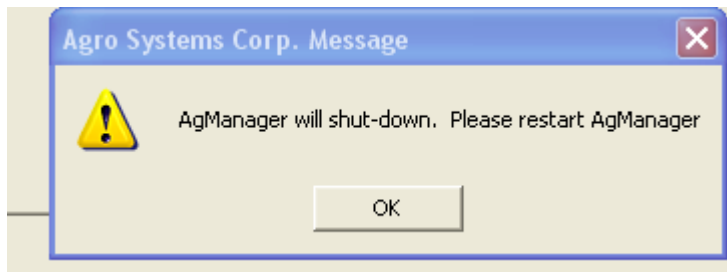


Select “Yes”, the system will make a backup of your current data; then restore the files that you have select to restore. You should then receive the message that the “Restore Operation was Successful”.

Select the open window on the taskbar “AgriSolutions”



Select okay on the “Restore Operation was Successful” message, in addition you should receive the message:



The program will close, and you will be able to “start” AgManager with the updated data.